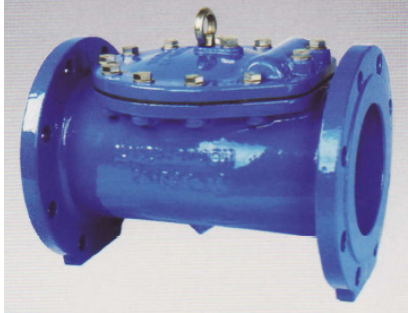
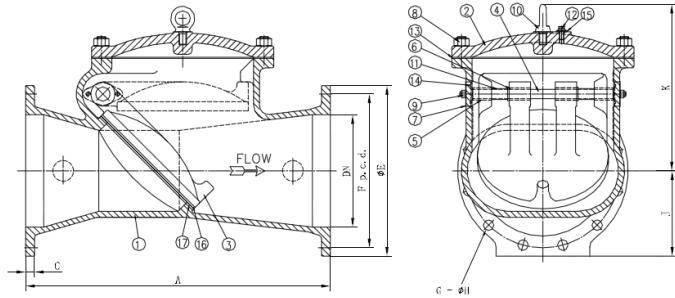
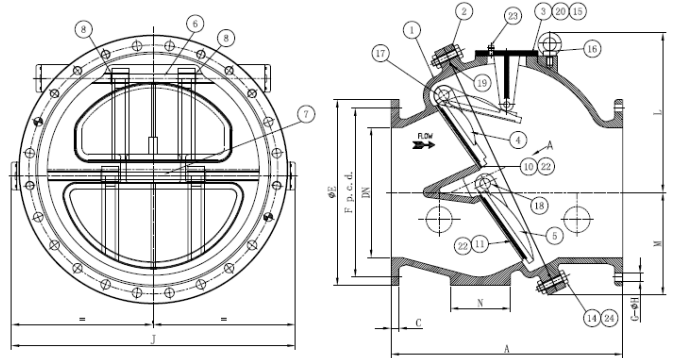


| <p><b>Description</b></p>               | <p>Duvalco check valves are of the Free-Acting Non-Slam design with single or multiple doors, designed to give minimal slam characteristics under all normal pump/flow conditions without the need for external damper or weight systems. These valves rely on the weight of the doors and their setting angle to provide the non-slam characteristics, thus avoiding the need for a shaft to penetrate the pressure housing of the valve body. This reduces the risk of mechanical failure and also of leakage to the exterior of the valve.</p>  |                                |                  |                         |      |              |                                |      |              |                                |       |                 |                   |                          |          |             |                  |          |             |            |          |             |
|---|---|--------------------------------|------------------|-------------------------|------|--------------|--------------------------------|------|--------------|--------------------------------|-------|-----------------|-------------------|--------------------------|----------|-------------|------------------|----------|-------------|------------|----------|-------------|
| <p><b>Size Range</b></p>                | <p>DN150 to DN1000</p>  |                                |                  |                         |      |              |                                |      |              |                                |       |                 |                   |                          |          |             |                  |          |             |            |          |             |
| <p><b>Pressure Rating</b></p>           | <p>All valves are rated at PN16 for 16 bar continuous working pressure<br/><i>(Other pressures also available upon request)</i></p>   |                                |                  |                         |      |              |                                |      |              |                                |       |                 |                   |                          |          |             |                  |          |             |            |          |             |
| <p><b>Design Standard</b></p>           | <p>BS 5153</p>  |                                |                  |                         |      |              |                                |      |              |                                |       |                 |                   |                          |          |             |                  |          |             |            |          |             |
| <p><b>Materials of Construction</b></p> | <table border="1"> <thead> <tr> <th>Description</th> <th>Material</th> <th>Standard</th> </tr> </thead> <tbody> <tr> <td>Body</td> <td>Ductile iron</td> <td>BS EN 1563 Grade EN-GJS-400-15</td> </tr> <tr> <td>Disc</td> <td>Ductile iron</td> <td>BS EN 1563 Grade EN-GJS-400-15</td> </tr> <tr> <td>Shaft</td> <td>Stainless steel</td> <td>EN 10088-3 1.4021</td> </tr> <tr> <td>Hinge to Disk connection</td> <td>Gunmetal</td> <td>BS 1400 LG2</td> </tr> <tr> <td>Disk Facing Ring</td> <td>Gunmetal</td> <td>BS 1400 LG2</td> </tr> <tr> <td>Body Seats</td> <td>Gunmetal</td> <td>BS 1400 LG2</td> </tr> </tbody> </table>   | Description                    | Material         | Standard                | Body | Ductile iron | BS EN 1563 Grade EN-GJS-400-15 | Disc | Ductile iron | BS EN 1563 Grade EN-GJS-400-15 | Shaft | Stainless steel | EN 10088-3 1.4021 | Hinge to Disk connection | Gunmetal | BS 1400 LG2 | Disk Facing Ring | Gunmetal | BS 1400 LG2 | Body Seats | Gunmetal | BS 1400 LG2 |
| Description                             | Material  | Standard                       |                  |                         |      |              |                                |      |              |                                |       |                 |                   |                          |          |             |                  |          |             |            |          |             |
| Body                                    | Ductile iron  | BS EN 1563 Grade EN-GJS-400-15 |                  |                         |      |              |                                |      |              |                                |       |                 |                   |                          |          |             |                  |          |             |            |          |             |
| Disc                                    | Ductile iron  | BS EN 1563 Grade EN-GJS-400-15 |                  |                         |      |              |                                |      |              |                                |       |                 |                   |                          |          |             |                  |          |             |            |          |             |
| Shaft                                   | Stainless steel   | EN 10088-3 1.4021              |                  |                         |      |              |                                |      |              |                                |       |                 |                   |                          |          |             |                  |          |             |            |          |             |
| Hinge to Disk connection                | Gunmetal  | BS 1400 LG2                    |                  |                         |      |              |                                |      |              |                                |       |                 |                   |                          |          |             |                  |          |             |            |          |             |
| Disk Facing Ring                        | Gunmetal  | BS 1400 LG2                    |                  |                         |      |              |                                |      |              |                                |       |                 |                   |                          |          |             |                  |          |             |            |          |             |
| Body Seats                              | Gunmetal  | BS 1400 LG2                    |                  |                         |      |              |                                |      |              |                                |       |                 |                   |                          |          |             |                  |          |             |            |          |             |
| <p><b>Testing</b></p>                   | <p><b>All valves are works tested to the following pressures:-</b></p> <table border="1"> <thead> <tr> <th>Description</th> <th>Nominal Pressure</th> <th>Hydraulic Test Pressure</th> </tr> </thead> <tbody> <tr> <td>Body</td> <td>16 bar</td> <td>24 bar</td> </tr> <tr> <td>Seat</td> <td>16 bar</td> <td>17.6 bar</td> </tr> </tbody> </table>   | Description                    | Nominal Pressure | Hydraulic Test Pressure | Body | 16 bar       | 24 bar                         | Seat | 16 bar       | 17.6 bar                       |       |                 |                   |                          |          |             |                  |          |             |            |          |             |
| Description                             | Nominal Pressure  | Hydraulic Test Pressure        |                  |                         |      |              |                                |      |              |                                |       |                 |                   |                          |          |             |                  |          |             |            |          |             |
| Body                                    | 16 bar  | 24 bar                         |                  |                         |      |              |                                |      |              |                                |       |                 |                   |                          |          |             |                  |          |             |            |          |             |
| Seat                                    | 16 bar  | 17.6 bar                       |                  |                         |      |              |                                |      |              |                                |       |                 |                   |                          |          |             |                  |          |             |            |          |             |
| <p><b>Corrosion Protection</b></p>      | <ol style="list-style-type: none"> <li>1) All internal and external cast surfaces are coated with fusion bonded powder epoxy.</li> <li>2) Epoxy coating is WRAS listed for potable water applications and meets the requirements of BS 6920 for water quality testing.</li> <li>3) Coating colour - blue to RAL 5005</li> </ol>   |                                |                  |                         |      |              |                                |      |              |                                |       |                 |                   |                          |          |             |                  |          |             |            |          |             |

**Dimensional Details**



| DN  | A    | C    | ØE  | F<br>p. c. d. | G - ØH   | J     | K   |
|-----|------|------|-----|---------------|----------|-------|-----|
| 150 | 508  | 19   | 285 | 235           | 8-Ø22.2  | 142.5 | 285 |
| 200 | 610  | 20   | 340 | 292.1         | 8-Ø22.2  | 170   | 335 |
| 250 | 711  | 21   | 400 | 355.6         | 12-Ø22.2 | 200   | 365 |
| 300 | 813  | 24.5 | 455 | 406.4         | 12-Ø25.4 | 227.5 | 443 |
| 350 | 889  | 26.5 | 520 | 469.9         | 12-Ø25.4 | 260   | 488 |
| 400 | 965  | 28   | 580 | 520.7         | 12-Ø25.4 | 290   | 537 |
| 450 | 1016 | 30   | 640 | 584.2         | 12-Ø25.4 | 320   | 569 |



| DN  | A    | C    | ØE   | M   | L   | J    | N   | F p.c.d. | G-ØH     |
|-----|------|------|------|-----|-----|------|-----|----------|----------|
| 500 | 890  | 30.5 | 715  | 406 | 613 | 1128 | 230 | 641.4    | 16-Ø25.4 |
| 600 | 920  | 34   | 840  | 451 | 673 | 1226 | 230 | 755.7    | 16-Ø31.8 |
| 900 | 1190 | 44.5 | 1125 | 635 | 936 | 1551 | 270 | 1092.2   | 24-Ø35   |

**Face-to-face length**

According to manufacturer's standards.

**Flange Drilling**

Flanges for pipe connection are compatible with flanges to EN 1092-2 up to PN16.

Alternatively, flanges to other standards, including BS10 Table E can be supplied.

**\*Note**

*Please refer to the General Arrangement drawing for full details of the valves.*

|                       |   |
|-----------------------|---|
| <p><b>Marking</b></p> | <p><b>All valves are marked with the following information:-</b></p> <ul style="list-style-type: none"> <li>- Class</li> <li>- Size</li> <li>- PN rating</li> <li>- 'Duvalco'</li> <li>- Material - SG / GGG50</li> <li>- BS 5153</li> <li>- Year of manufacture</li> </ul> |
| <p><b>Packing</b></p> | <p>All valves will be despatched properly packed, with all items separated to avoid damage to coating, castings, facings, flange faces, etc.</p>  |