

Flow straighteners

Flow straighteners are designed to avoid the negative effects that flow disturbance might generate on metering.

Mainly to be installed directly upstream of horizontal Woltmann meters, they refurbish the flow vane potentially disturbed by elements such as valves, filters, elbows, pumps ...

Accurate metering is then secured despite the upstream condition.

Two straightener types exist. Types apply for the requested sizes:

S-3D type for sizes from DN50 to DN200

RJ-1 type for sizes from DN250 to DN500

S-3D description

S-3D combines the effects of both increase/decrease in flow vane diameter and ribs placed in the flow direction to break turbulences.

Due to its compact design, S-3D only requires 3 times its diameter for installation.

RJ-1 description

RJ-1 is made of triangular channels guiding the flow, limiting the impact of turbulences.

All lengths of RJ-1 require 500 mm of installation space.

Installation requirements

- > S-3D can be installed in any direction.
- > RJ-1 should be installed following the flow direction indicated on the body.

Variants

Special drilling and high pressure RJ-1 version (40 bars) available upon request from sizes 150 to 300 mm (cast iron PN 25 or 40).



> S-3D Flow Straightener



> RJ-1 Flow Straightener

- > Specific design to break flow turbulences
- > Compact design resulting in shorter length needed for installation

Technical Specifications

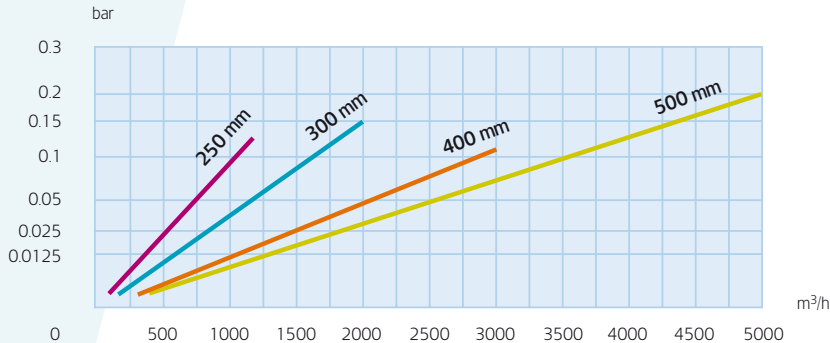
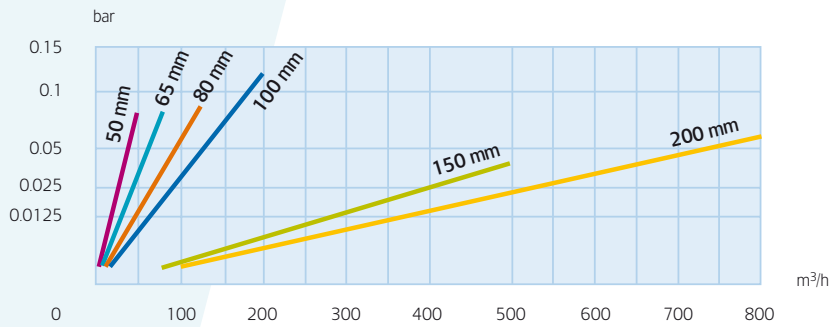
S-3D Version

| Nominal diameter (DN) | mm | 50 | 65 | 80 | 100 | 150 | 200 |
|-------------------------|--------|----------|--------|------|-----|-------------|-----|
| | inches | 2" | 2" 1/2 | 3" | 4" | 6" | 8" |
| End connection (Flange) | | PN 10/16 | | | | PN 10 or 16 | |
| Length (L) | mm | 150 | 195 | 240 | 300 | 450 | 600 |
| Width (l) | mm | 165 | 185 | 200 | 222 | 323 | 427 |
| Weight | kg | 7.5 | 10.5 | 13.5 | 22 | 51 | 89 |
| Maximum pressure | bar | 20 | | | | | |

RJ-1 Version

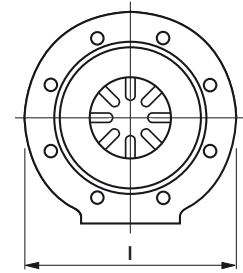
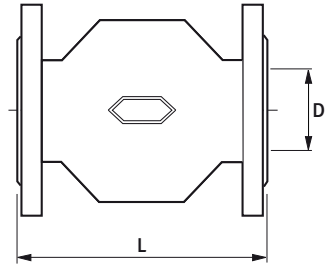
| Nominal diameter (DN) | mm | 250 | 300 | 400 | 500 |
|-------------------------|--------|-------------|-----|-----|-----|
| | inches | 10" | 12" | 16" | 20" |
| End connection (Flange) | | PN 10 or 16 | | | |
| Length (L) | mm | 500 | | | |
| Weight | kg | 81 | 97 | 160 | 221 |
| Maximum pressure | bar | 20 | | | |

Head Loss

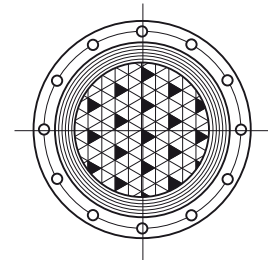
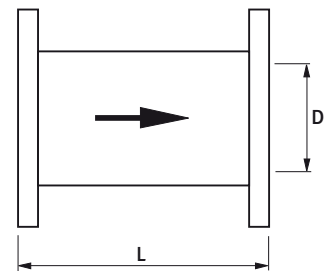


Dimensions

> S-3D



> RJ-1



About Itron Inc.

Itron Inc. is a leading technology provider to the global energy and water industries. Our company is the world's leading provider of metering, data collection and utility software solutions, with nearly 8,000 utilities worldwide relying on our technology to optimize the delivery and use of energy and water. Our products include electricity, gas and water meters, data collection and communication systems, including automated meter reading (AMR) and advanced metering infrastructure (AMI); meter data management and related software applications; as well as project management, installation, and consulting services. To know more, start here: www.itron.com

For more information, contact your local sales representative or agency.

Itron

11, boulevard Pasteur
67500 Haguenau
France
Phone: +33 3 88 90 63 00
Fax: +33 3 88 73 23 20
www.itron.com