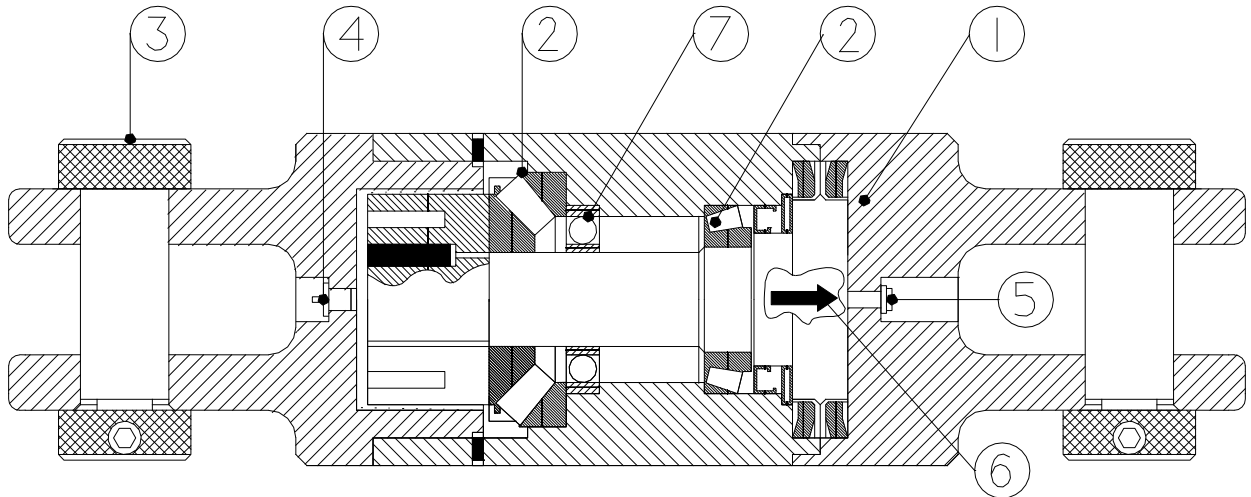


HEAVY DUTY SWIVEL - DUB

These Pullback Swivels have been developed specifically for directional drilling applications. They are designed for prolonged use, under load, in an aggressive environment. The Swivel permits rotation of the drill pipe while protecting the utility from twisting. It is used to couple the reamer head to the utility being pulled back. Several end configurations and load capacities are available to handle any directional drilling application.



1. Multiple Stage Sealing System
2. Tapered Roller Bearing Design (Spherical Roller Bearing on 40 ton & 80 ton models only)
3. Hardened Clevis Pins
4. Grease Nipple
5. Pressure Relief Valve
6. Pull Direction Arrow
7. Radial Ball Bearing on 40 ton and 80 ton models

DESIGN FEATURES

The single most important feature of this patented product is the sealing systems. The multiple sealing stages become progressively finer so that an oil seal is not required to keep out sand and other coarse particles which can easily destroy a simple lip seal. This is done by using much sturdier seals designed for use in such applications as cement mixers or military tanks in desert conditions.

In addition to the sealing system, these swivels offer a lubrication system complete with relief valve so that the seals cannot be damaged by over greasing. Grease need only be applied in small quantities since loss of lubricant is almost non-existent.

The type of bearings used varies depending on swivel type and size. The Clevis-Box swivels utilise spherical, cylindrical and tapered roller bearings designed to provide an extra measure of side load capacity caused by the treaded or solid connection. The Clevis-Clevis swivels use back-to-back tapered roller bearings in the smaller sizes, but units 40 ton and above utilise the same spherical, cylindrical and tapered roller bearings as the Clevis-Box Swivels

MAJOR FEATURES

- Specifically designed for Directional Drilling applications
- Extensive size range from 2.5 to 250 Ton
- Multiple Stage Sealing System
- Clevis and/or Box connections available with hardened lockable Clevis Pins
- Factor of safety on body of at least 5
- Compact Size

Continued Overleaf

The company follow a policy of continuous product development and as such reserves the right to make alterations to equipment and techniques without prior notice.

PIPE EQUIPMENT SPECIALISTS LTD

66 DUKESWAY, TEESIDE INDUSTRIAL ESTATE, THORNABY, STOCKTON-ON-TEES, TS17 9LT, ENGLAND

TEL: +44 (0) 1642 769789 FAX: +44 (0) 1642 769456

www.pipe-equipment.co.uk Email: info@pipe-equipment.co.uk



WP/TIS/HDSS/800F