

About:

PLASSON have one of the widest ranges of pipe fittings in the world with sizes ranging from 16mm to 900mm, pressure ratings 0 bar to 25 bar, accepting nearly all existing pipe ranges, metric and imperial including polyethylene, lead, copper and galvanised. PLASSON have a 50 year in the ground track record for its products. We pride ourselves not only on the quality of our fittings but also on our high standard of service, delivery and aftersales support.

Product Range:

- mechanical
- pushfit
- electrofusion
- valves
- metering
- repair clamps
- threaded
- tools/accessories
- specialist ef tooling

Contact Us:

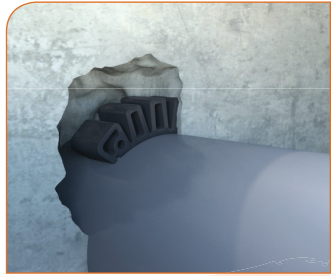
Plasson UK Ltd
 Plasson House
 27 Albert Drive
 Burgess Hill
 West Sussex
 RH15 9TN

Tel: 01444 244446
 Fax: 01444 258683
 sales@plasson.co.uk

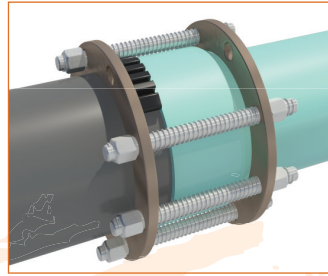
Flex Restraint

For axial restraint of PE pipe

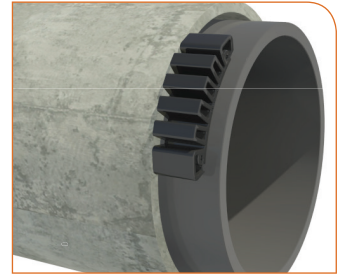
The restraint is a flexible bar, which is fused to the pipe by electrofusion to create a welded shoulder that can restrain the axial movement of pipes in various applications:



Anchoring the pipe to a concrete wall such as a manhole or tank.



Restraining the pipe to a gasket bell fitting to facilitate cross connection with other piping systems.



Blocking pipe movement after slip-lining.

Plasson Flex Restraint Advantages

Terminals are side mounted, to enabling use of wide 50mm/2" strap, for better clamping.

Concealed wire - eliminates risk of smoke or unintentional contact with hot wire.

Clips for attaching the restraint to the clamping strap - facilitates installation.



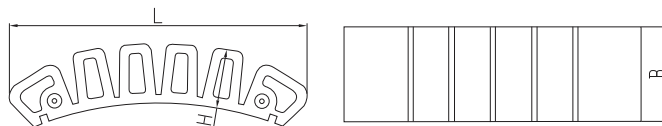
Made of PE 100/PE4710 resin.



Flex Restraint Tension Belt

Technical Information

- Fits any PE pipe in the size range of 160-1600mm.
- Made of PE 100/PE4710 resin.
- Can be welded by any standard EF control box with barcode or manual input.
- Designed and tested to support 7000 LBS/3100 dN (kg) of axial force.
- Use multiple units to achieve required force
- 4.0mm terminals.
- Tooling available to hire from all major outlets



Item Number	L	H	B	Wt.
49009990	7.95 inch 202 mm	1.57 inch 40 mm	2.56 inch 65 mm	0.66 lbs 300 gr