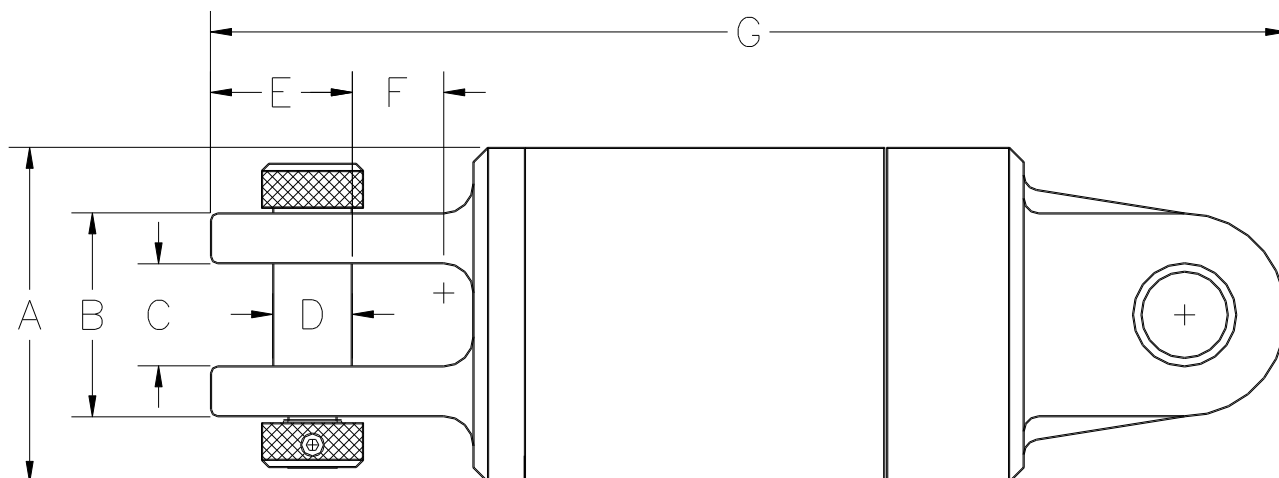


HEAVY DUTY SWIVEL - DUB



Part Number	Safe Working Limit	Ultimate Load	A	B	C	D	E	F	G	Net Weight
6550023	5,000 lb 2.5 Tons	25,000 lb 111 kN	2" 51 mm	2" 51 mm	1" 25 mm	11/16" 17 mm	1-3/16" 30 mm	13/16" 21 mm	7-1/2" 190 mm	3.8 lb 1.7 kg
6550045	10,000 lb 5 Tons	50,000 lb 222 kN	3-1/8" 80 mm	2-1/4" 57 mm	1-1/4" 32 mm	3/4" 19 mm	1-5/16" 33 mm	7/8" 22 mm	11-1/2" 290 mm	15 lb 6.8 kg
6550091	20,000 lb 10 Tons	100,000 lb 445 kN	3-3/4" 95 mm	2-3/4" 70 mm	1-1/2" 38 mm	1" 25 mm	1-5/8" 41 mm	15/16" 24 mm	13-5/8" 350 mm	27 lb 12 kg
6550136	30,000 lb 15 Tons	150,000 lb 667 kN	4-3/4" 121 mm	3-1/4" 83 mm	1-3/4" 44 mm	1-1/8" 29 mm	2-1/16" 52 mm	1-7/16" 36 mm	18" 460 mm	57 lb 26 kg
6550182	40,000 lb 20 Tons	200,000 lb 890 kN	5-3/4" 146 mm	3-1/2" 89 mm	1-3/4" 44 mm	1-3/8" 35 mm	2-1/2" 63 mm	1-7/16" 36 mm	18-1/2" 470 mm	83 lb 38 kg
6550273	60,000 lb 30 Tons	300,000 lb 1330 kN	6" 152 mm	3-1/2" 89 mm	1-3/4" 44 mm	1-3/8" 35 mm	2-1/2" 63 mm	1-7/16" 36 mm	18-1/2" 470 mm	85 lb 39 kg
6550364	80,000 lb 40 Tons	400,000 lb 1780 kN	6-1/2" 165 mm	4-5/8" 117 mm	2-1/8" 54 mm	1-3/4" 44 mm	3-5/16" 84 mm	1-7/8" 48 mm	24-1/2" 620 mm	150 lb 68 kg
6550545	120,000 lb 60 Tons	600,000 lb 2670 kN	7-1/2" 190 mm	5-1/2" 140 mm	2-3/4" 70 mm	2-1/8" 54 mm	3-5/8" 92 mm	2-5/8" 67 mm	29" 740 mm	250 lb 113 kg
6550727	160,000 lb 80 Tons	800,000 lb 3560 kN	9" 229 mm	6" 152 mm	3-1/4" 83 mm	2-1/2" 63 mm	4-13/16" 122 mm	2-3/4" 70 mm	33-1/2" 850 mm	380 lb 172 kg

The **Safe Working Limit** is calculated using a 5:1 safety factor based on the ultimate load. The **Ultimate Load** is the tensile loading required to separate the DUB-Swivel® into two or more parts.

It is our recommendation to always select a swivel larger than the machine capacity. This may cost a little more, but when this is done and the product used carefully, lifespans in excess of 3000 hours have been recorded.

Every effort is made to ensure that information given in this table is correct but Pipe Equipment Specialists Ltd. cannot be held responsible for mistakes in printing or misinterpretation that could lead to prosecution on incorrectly purchased products.

PIPE EQUIPMENT SPECIALISTS LTD

66A DUKESWAY, TEESIDE INDUSTRIAL ESTATE, THORNABY, STOCKTON-ON-TEES, TS17 9LT, ENGLAND

TEL: +44 (0) 1642 769789 FAX: +44 (0) 1642 769456

www.pipe-equipment.co.uk Email: info@pipe-equipment.co.uk



WP/TIS/HDDS/0712R