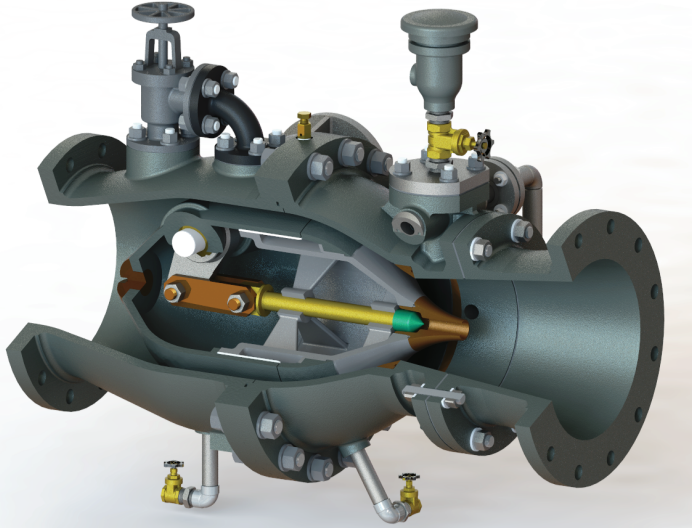




Larner Johnson Needle Valve



The Larner Johnson Valve is used for Free Discharge Control at pressure above that of the Fixed Cone valve. The valve can also be used for In-Line Pressure or Flow Control Applications and offers fine (full range) adjustment.



Features

- Accurate Pressure Control Capabilities
- Accurate Flow Control Capabilities
- All parts of the valve are circular, hence free from distortion under high pressures
- Various Discharge Port (Characteristic) Options Available
- Pilot Balanced Operation (Low Operating Power Requirements)
- Low Maintenance and Long Life
- Wide Metal to Metal Seat Design for Reliable and Durable Shut Off
- Heavy Duty Design and Construction

Options

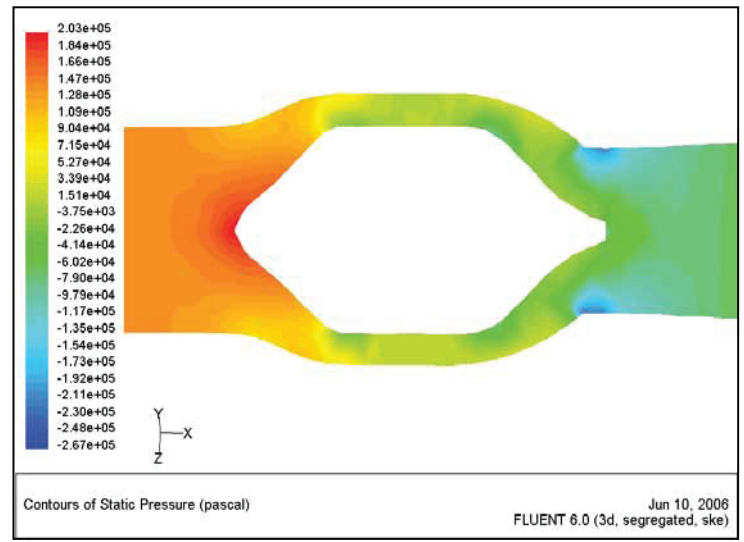
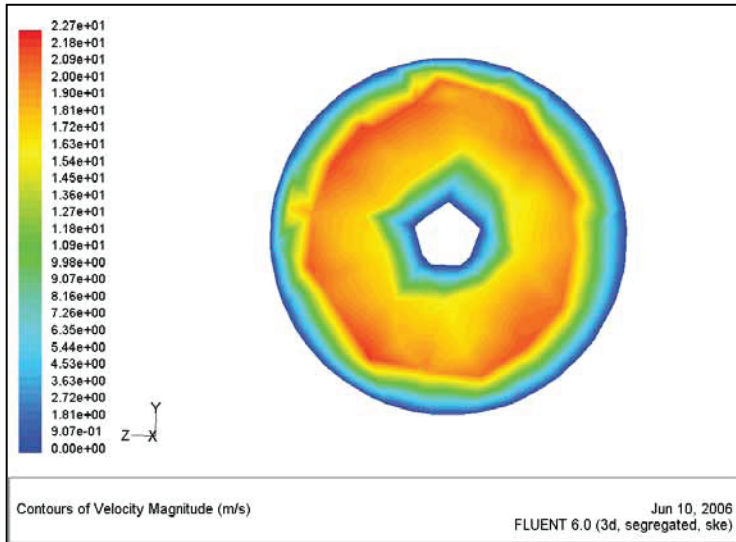
- Anti – Cavitation Features Available (Air Belts)
- Jet Dispersal Option

Technical

- Medium velocity discharge capability (up to 8m/sec)
- Pressures typically up to 50bar
- Size Range – DN150 – DN2500
- Material – Cast Iron and Cast Steel



Larner Johnson Needle Valve



The Captain James Cook Memorial was built by the Commonwealth Government to commemorate the Bicentenary of Captain James Cook's first sighting of the east coast of Australia. The memorial includes a water jet located in the central basin at Regatta Point of Lake Burley Griffin in Canberra. While running both pumps simultaneously the main jet throws approximately six tons of water into the air at any instant, reaching a maximum height of 147 metres. Alternatively the jet can be run on a single pump reaching a lower height of 110 metres. All of which is controlled through a Blackhall Engineering Larner Johnson valve.

