

Global Presence - Local Commitment

 **PLASSON**<sup>®</sup>

Plasson Universal  
Slip Repair Coupler



***SLIDE  
N'SEAL***







**PN16**

*Pull-Out Resistant*

## Product Diameter Range

|                                 |                                |                                 |                                 |                                 |                                 |
|---------------------------------|--------------------------------|---------------------------------|---------------------------------|---------------------------------|---------------------------------|
| <b>19-22mm</b><br>(0.75"-0.87") | <b>24-28mm</b><br>(0.94"-1.1") | <b>31-35mm</b><br>(1.22"-1.37") | <b>40-43mm</b><br>(1.57"-1.69") | <b>48-51mm</b><br>(1.89"-2.00") | <b>60-64mm</b><br>(2.36"-2.52") |
| 176100019022                    | 176100024028                   | 176100031035                    | 176100040043                    | 176100048051                    | 176100060064                    |

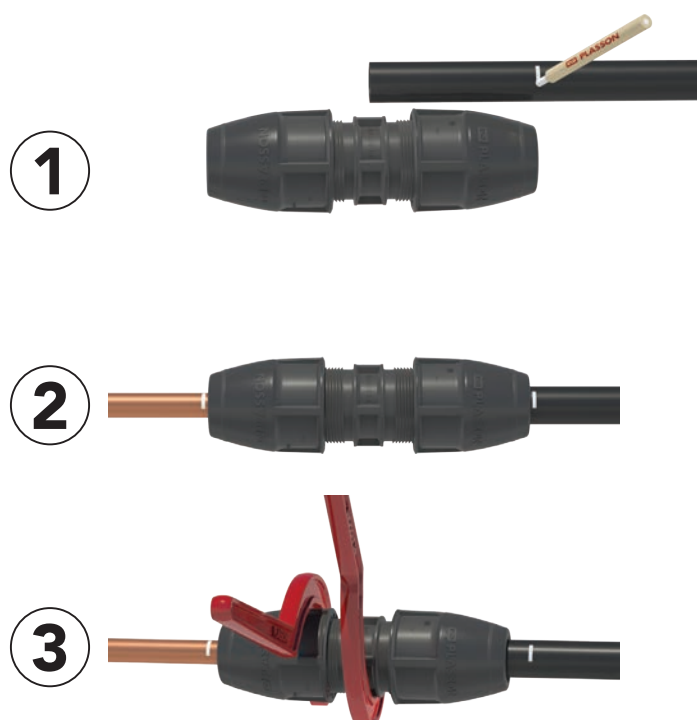
- EN** Fits a wide range of pipe materials
- ES** Compatible con una amplia variedad de tuberías y materiales
- FR** Compatible avec un grand nombre de tubes
- IT** Adatto per la giunzione di un'ampia gamma di materiali

|   |                              |
|---|------------------------------|
|  | PE, PP, PEX                  |
|  | PVC-U, ABS                   |
|  | PB, PP-R                     |
|  | Lead/Plomb<br>Plomó/Piombo   |
|  | Copper/Cuivre<br>Cobre/Rame  |
|  | Steel/Acier<br>Acero/Acciaio |



## Assembly Instructions

---



- EN** **1** Mark pipe insertion depth on the pipe (approximately half the fitting length). Undo nuts 1 to 2 turns while ensuring they remain on the fitting.
- 2** Insert the pipe until the mark reaches the end of the nut.
- 3** While holding the fitting body with a Plasson wrench (or a similar tool) tighten the nut firmly with a second wrench.

**Note:** If the fitting is reused, make sure metal teeth are present in the split ring.

- FR** **1** Marquer la longueur d'emboîtement sur chaque tube (au plus une demi-longueur de manchon). Dévisser les écrous de 1 ou 2 tours en les laissant sur le manchon.
- 2** Insérer chaque tube jusqu'au marquage.
- 3** Serrer l'écrou fermement avec une clé (Plasson ou équivalent) en maintenant le corps avec une autre clé.

**NB:** Raccord réutilisable. Vérifier de la conformité de la bague.

- ES** **1** Marque la profundidad de inserción en la tubería (aproximadamente la mitad de la longitud del accesorio). Desenroscar 1 o 2 vueltas los racores de apriete del accesorio, asegurándose que éstos no se desmontan completamente.
- 2** Introduzca el accesorio hasta que las marcas en la tubería queden alineadas con el final de los racores de apriete.
- 3** Mantenga el cuerpo del accesorio fijo utilizando una llave Plasson o similar mientras aprieta los racores del accesorio.

**Nota:** Si reutiliza el accesorio, asegúrese que los dientes metálicos del casquillo de apriete se encuentran en perfectas condiciones.

- IT** **1** Marcare sul tubo la profondità di inserimento (circa la metà della lunghezza del manicotto). Svitare le ghiera di 1 o 2 giri assicurandosi che rimangano sul raccordo.
- 2** Inserire il tubo fino al punto in cui la fine della ghiera è allineata alla marcatura.
- 3** Stringere la ghiera con una chiave Plasson (o utensile simile) tenendo fermo il corpo del raccordo con un'altra chiave.

**Nota:** In caso di riutilizzo del raccordo verificare la presenza dei dentini metallici sullo split ring.

# Fitting Diameter Range

## 19-22mm (0.75"-0.87")

| Pipe Type   | Size       | Standard   |
|---|------------|--|
| PE - Metric   | 20         | ISO 4427<br>EN 12201<br>AS 4130 (series1,series2)                            |
| PVC - Metric  | 20         | EN/ISO/BS 1452   |
| PP - Metric   | 20         | ISO 15874  |
| STEEL - Galvanized Schedules 40,80                    | 1/2"       | ASTM A53<br>ANSI/ASME B36<br>EN 10208/10216<br>BS 3601/3602<br>DIN 1629/2448 |
| PE - IPS Imperial                                     | 1/2"       | ASTM D 3035<br>ASTM F 714<br>AWWA C906<br>BS1972<br>BS 3284                  |
| PVC - IPS Imperial                                    | 1/2"       | ASTM D 1785<br>Schedules 40,80,120<br>UPVC Imperial<br>BS 3505:1968          |
| PE (Australia) - NB                                   | NB15       | AS 4130 (series3 nominal inside diameter-based on IPS)                       |
| COPPER (Australia)                                    | 20 (3/4")  | AS 1432  |
| PVC (Australia) - NB                                  | NB15       | AS 1477 UPVC   |
| PE (USA) - Inside controlled diameter SDR 7,9,11.5,15 | 1/2"       | ASTM D 2239  |
| PE (USA) - CTS outside controlled diameter            | 5/8", 3/4" | ASTM D 2737  |
| COPPER (USA) - Water tube                             | 5/8", 3/4" | ASTM B 88  |
| PE (Ireland) - Heavy Gauge                            | 1/2"       | IS 134 table 2   |

## 24-28mm (0.94"-1.1")

| Pipe Type   | Size    | Standard   |
|---|---------|--|
| PE - Metric   | 25      | ISO 4427<br>EN 12201<br>AS 4130 (series1,series2)                            |
| PVC - Metric  | 25      | EN/ISO/BS 1452   |
| PP - Metric   | 25      | ISO 15874  |
| STEEL - Galvanized Schedules 40,80                  | 3/4"    | ASTM A53<br>ANSI/ASME B36<br>EN 10208/10216<br>BS 3601/3602<br>DIN 1629/2448 |
| PE - IPS Imperial                                   | 3/4"    | ASTM D 3035<br>ASTM F714<br>AWWA C906<br>BS 1972<br>BS 3284                  |
| PVC - IPS, Imperial                                 | 3/4"    | ASTM D1785<br>Schedules 40,80,120<br>UPVC Imperial<br>BS 3505:1968           |
| PE (Australia) - NB                                 | NB20    | AS 4130 (series3 nominal inside diameter-based on IPS)                       |
| COPPER (Australia)                                  | 25 (1") | AS 1432  |
| PVC (Australia) - NB                                | NB20    | AS 1477 UPVC   |
| PE (USA) - Inside controlled diameter SDR 9,11.5,15 | 3/4"    | ASTM D2239   |
| PE (USA) - CTS outside controlled diameter          | 3/4"    | ASTM D2737   |
| COPPER (USA) - Water tube                           | 3/4"    | ASTM B88   |
| PE (Ireland) - Heavy Gauge + Normal Gauge           | 3/4"    | IS 134 table 1+ table 2  |

## 31-35mm (1.22"-1.37")

| Pipe Type  | Size        | Standard   |
|--|-------------|--|
| PE - Metric  | 32          | ISO 4427<br>EN 12201<br>AS 4130 (series1,series2)                            |
| PVC - Metric                                       | 32          | EN/ISO/BS 1452   |
| PP - Metric  | 32          | ISO 15874  |
| STEEL - Galvanized Schedules 40,80                 | 1"          | ASTM A53<br>ANSI/ASME B36<br>EN 10208/10216<br>BS 3601/3602<br>DIN 1629/2448 |
| PE - IPS Imperial                                  | 1"          | ASTM D3035<br>ASTM F714<br>AWWA C906<br>BS 1972<br>BS 3284                   |
| PVC - IPS, Imperial                                | 1"          | ASTM D1785<br>Schedules 40,80,120<br>UPVC Imperial<br>BS 3505:1968           |
| PE (Australia) - NB                                | NB25        | AS 4130 (series3 nominal inside diameter-based on IPS)                       |
| COPPER (Australia)                                 | 32 (1.1/4") | AS 1432  |
| PVC (Australia) - NB                               | NB25        | AS 1477 UPVC   |
| PE (USA) - Inside controlled diameter, SDR 9, 11.5 | 3/4"        | ASTM D2239   |
| PE (USA) - CTS outside controlled diameter         | 1"          | ASTM D2737   |
| COPPER (USA) - Water tube                          | 1"          | ASTM B88   |
| PE (Ireland) - Heavy Gauge                         | 1"          | IS 134 table 1   |
| PE (Ireland) - Heavy Gauge                         | 1.1/4"      | IS 134   |

## 40-43mm (1.57"-1.69")

| Pipe Type                                       | Size        | Standard   |
|---|-------------|--|
| PE - Metric                                     | 40          | ISO 4427<br>EN 12201<br>AS 4130 (series1,series2)                            |
| PVC - Metric                                    | 40          | EN/ISO/BS 1452   |
| PP - Metric                                     | 40          | ISO 15874  |
| STEEL - Galvanized Schedules 40,80              | 1.1/4"      | ASTM A53<br>ANSI/ASME B36<br>EN 10208/10216<br>BS 3601/3602<br>DIN 1629/2448 |
| PE - IPS Imperial                               | 1.1/4"      | ASTM D3035<br>ASTM F714<br>AWWA C906<br>BS 1972<br>BS 3284                   |
| PVC - IPS Imperial                              | 1.1/4"      | ASTM D1785<br>Schedules 40,80,120<br>UPVC Imperial<br>BS 3505:1968           |
| PE (Australia) - NB                             | NB32        | AS 4130 (series3 nominal inside diameter-based on IPS)                       |
| COPPER (Australia)                              | 40 (1.1/2") | AS 1432  |
| PE (Australia) - RURAL                          | 1.1/2" (40) | AS 2698  |
| PVC (Australia) - NB                            | NB32        | AS 1477 UPVC   |
| PE (USA) - Inside controlled diameter, SDR 11.5 | 1.1/4"      | ASTM D2239   |
| PE (USA) - CTS outside controlled diameter      | 1.1/4"      | ASTM D2737   |
| COPPER (USA) - Water tube                       | 1.1/4"      | ASTM B88   |
| PE (Ireland) - Heavy Gauge                      | 1.1/4"      | IS 134 table 2   |

## 48-51mm (1.89"-2.00")

| Pipe Type  | Size    | Standard   |
|--|---------|--|
| PE - Metric  | 50      | ISO 4427<br>EN 12201<br>AS 4130 (series1,series2)                            |
| PVC - Metric   | 50      | EN/ISO/BS 1452   |
| PP - Metric  | 50      | ISO 15874  |
| STEEL - Galvanized Schedules 40,80                     | 1.1/2"  | ASTM A53<br>ANSI/ASME B36<br>EN 10208/10216<br>BS 3601/3602<br>DIN 1629/2448 |
| PE - IPS Imperial                                      | 1.1/2"  | ASTM D3035<br>ASTM F714<br>AWWA C906<br>BS 1972<br>BS 3284                   |
| PVC - IPS Imperial                                     | 1.1/2"  | ASTM D1785<br>Schedules 40,80,120<br>UPVC Imperial<br>BS 3505:1968           |
| PE (Australia) - NB                                    | NB40    | AS 4130 (series3 nominal inside diameter-based on IPS)                       |
| COPPER (Australia)                                     | 50 (2") | AS1432   |
| PVC (Australia) - NB                                   | NB40    | AS 1477 UPVC   |
| PE (USA) - Inside controlled diameter SDR 9 + SDR 11.5 | 1.1/2"  | ASTM D2239   |
| PE (Ireland) - Heavy Gauge                             | 1.1/2"  | IS 134 table 2   |

## 60-64mm (2.36"-2.52")

| Pipe Type                                      | Size    | Standard   |
|--|---------|--|
| PE - Metric                                    | 63      | ISO 4427<br>EN 12201<br>AS 4130 (series1,series2)                            |
| PVC - Metric                                   | 63      | EN/ISO/BS 1452   |
| PP - Metric                                    | 63      | ISO 15874  |
| STEEL - Galvanized Schedules 40,80             | 2"      | ASTM A53<br>ANSI/ASME B36<br>EN 10208/10216<br>BS 3601/3602<br>DIN 1629/2448 |
| PE - IPS Imperial                              | 2"      | ASTM D3035<br>ASTM F714<br>AWWA C906<br>BS 1972<br>BS 3284                   |
| PVC - IPS Imperial                             | 2"      | ASTM D1785<br>Schedules 40,80,120<br>UPVC Imperial<br>BS 3505:1968           |
| PE (Australia) - NB                            | NB50    | AS 4130 (series3 nominal inside diameter-based on IPS)                       |
| COPPER (Australia)                             | 65 (3") | AS1432   |
| PVC (Australia) - NB                           | NB50    | AS 1477 UPVC   |
| PE (USA) - Inside controlled diameter SDR 11.5 | 2"      | ASTM D2239   |
| PE (Ireland) - Heavy Gauge                     | 2"      | IS 134 table 2   |